



# Rethinking Professional Development: A Focus on Ethical AI

---

BY: SAMARA MARIN



# Current Professional Development

---

1. Feels like a timed buffet of information before school starts.
2. However, a week to a month later. We have questions, and usually no follow-up
3. Similar, to going to an all you can eat buffet.





# Professional Learning Proposal

---

1. Ethical uses of AI for teachers and students.
2. Why? Most programs used in schools now incorporate AI.
3. Most students are already using AI with no foundation in its uses.







# Principal 1: Content Focused

---

1. Real World Applications: It's important for teachers to gain knowledge of AI because students are already using it. With teachers knowledgeable about AI, students can learn how to use AI in an ethical manner.
2. Ethical Implications: We must equip teachers with the knowledge and skills to navigate the ethical implications of AI in the classroom. AI is already being integrated into many school programs.
3. Practical Strategies: Teachers will be given strategies that work for their content with the programs they use in their classroom.



# Principal 2: Incorporates Active Learning

---

1. Interactive Workshops: We can start off by teaching core personnel in each department over the summer. This will allow for small hands-on groups that specify the learning for their departments.
2. Educators lead PD: This will create active learners by having those within the company learn in order to teach what they learned.







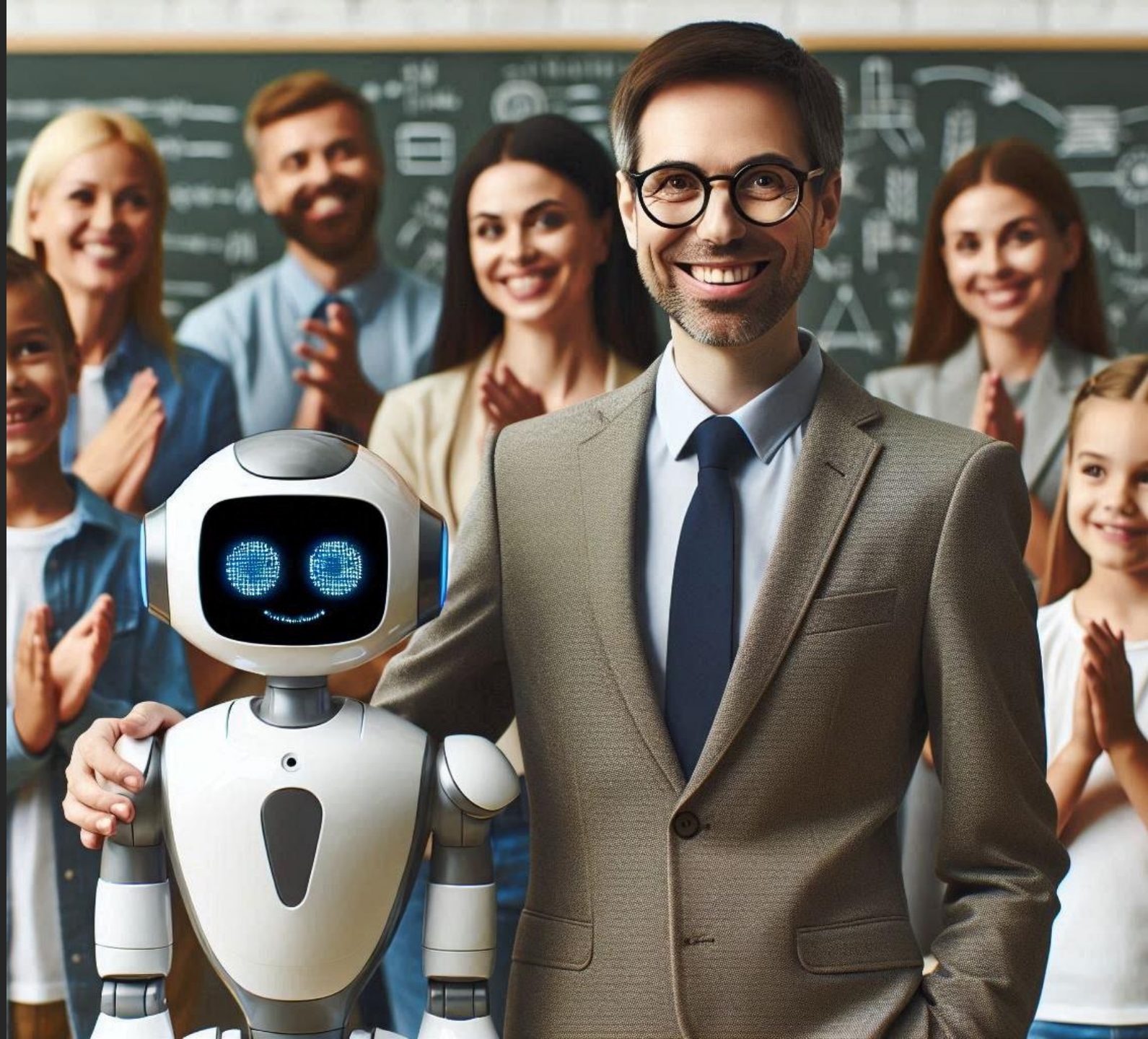
1. **Teacher Communities:** Educators can periodically come back to the group and teach how they are incorporating AI into lesson planning, lessons, or the classroom.
2. **Peer Coaching:** Pair teachers together to provide support and guidance on integrating AI into their classrooms.
3. **Collaborative Planning:** Give educators a chance to workshop ideas on how to use AI or even how to guard their projects against cheating by AI.



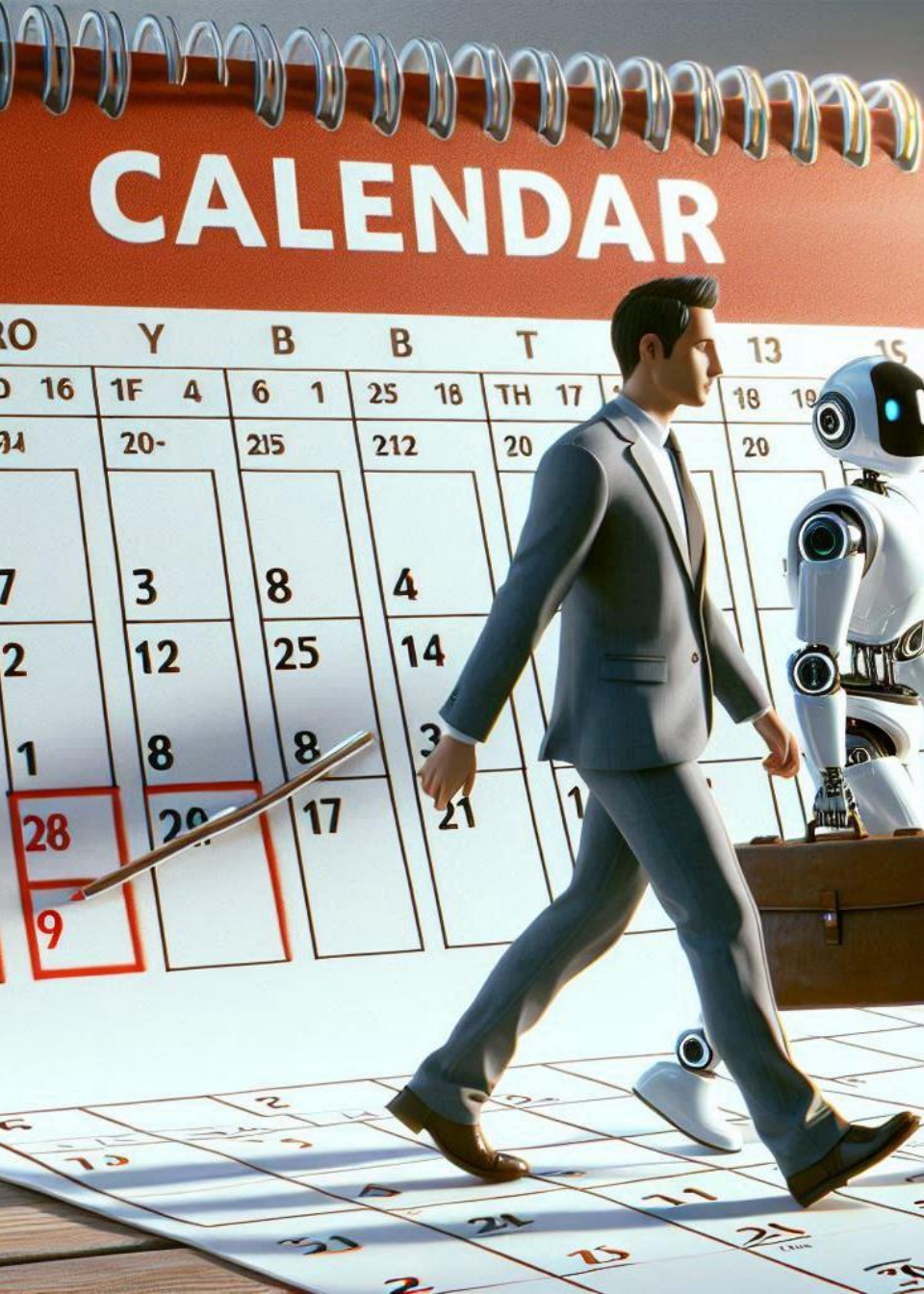
# Principal 4: Uses Models and Modeling

---

1. Expert Demonstrations: We can call on experts in AI to provide clarity such as Dr. Dockens at Lamar University.
2. Teacher Leaders: Teacher leaders will emerge who can lead their own professional learning sessions as the year progresses on what worked what didn't.
3. Collaborative Observation: Encourage teachers to observe each other's classrooms to see how AI is being used effectively.





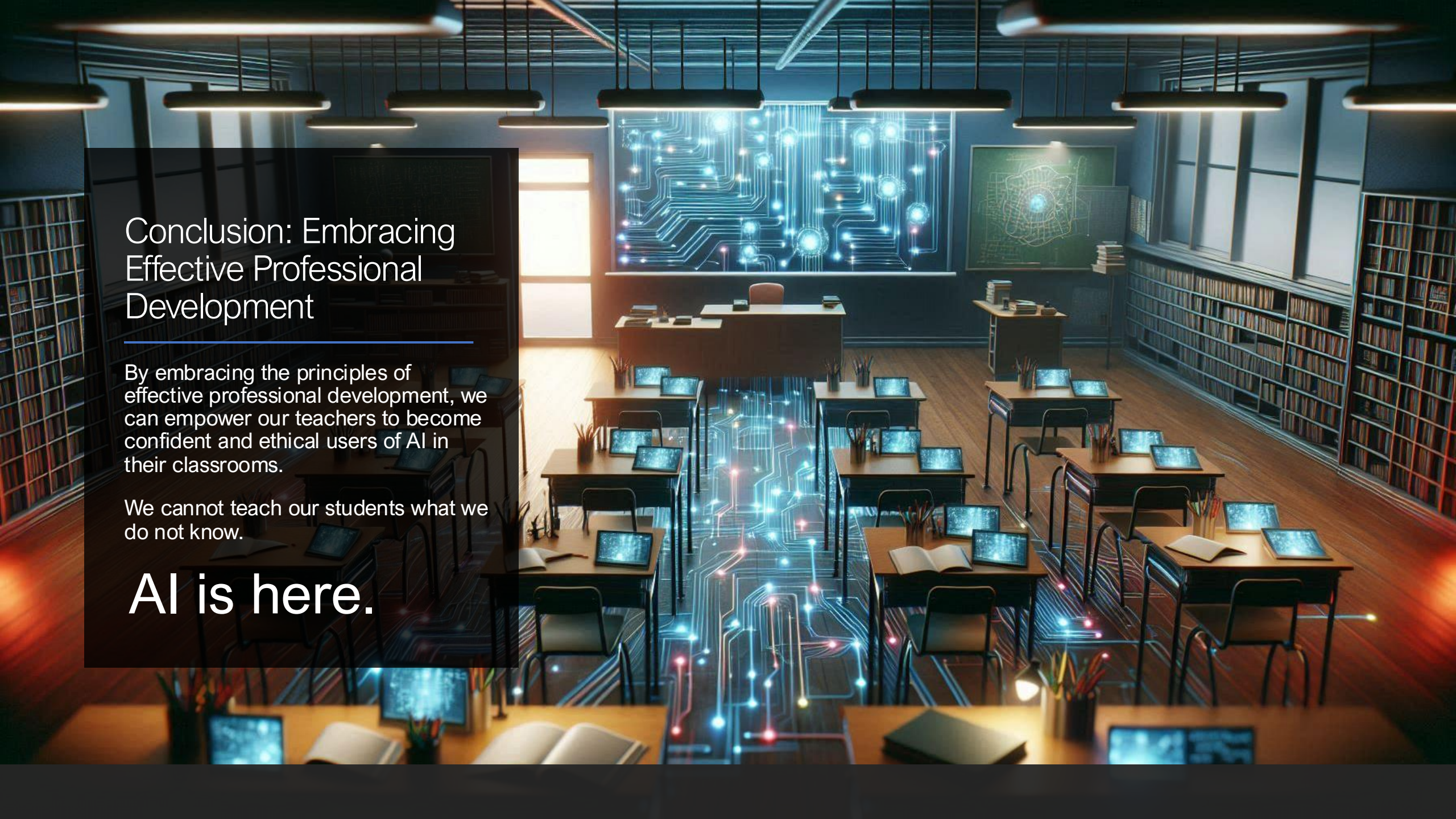


## Principal 5: Provides Coaching and Expert Support

---

1. One-on-one coaching: As a technology specialist, I hope to provide individual coaching to support teachers as they integrate AI into their teaching.
2. Professional Learning Communities: By creating experts within the departments, our weekly PLCs will provide a space to facilitate conversations on the ethical use of AI.
3. Resource Sharing: Educators can share what resources worked for them and coach other staff within the campus.





## Conclusion: Embracing Effective Professional Development

By embracing the principles of effective professional development, we can empower our teachers to become confident and ethical users of AI in their classrooms.

We cannot teach our students what we do not know.

# AI is here.